

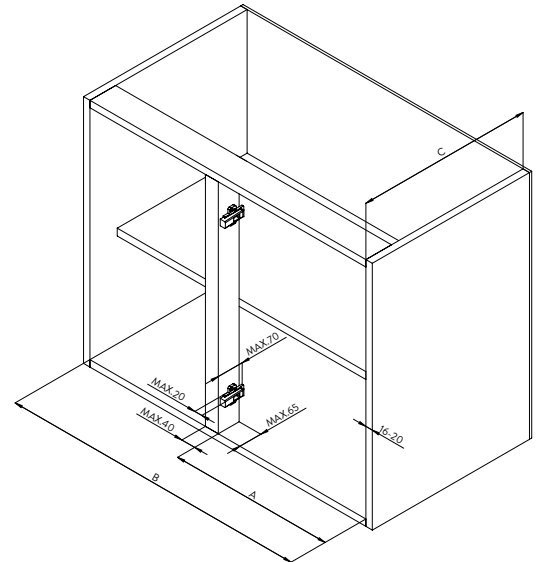


Fitting Instructions: Aura Glide Corner Unit

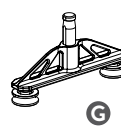
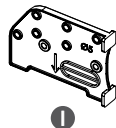
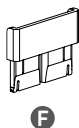
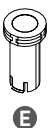
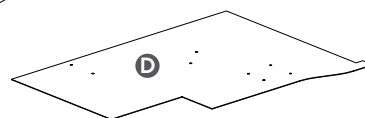
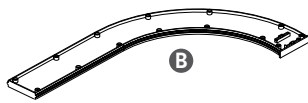
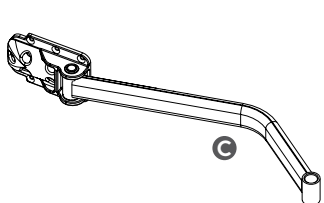
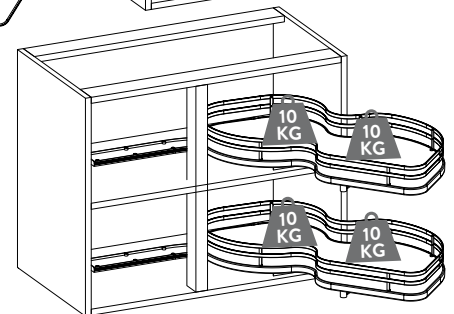
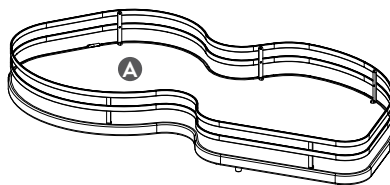
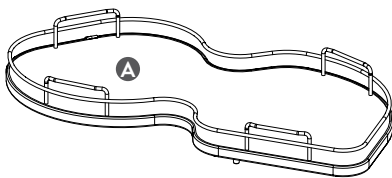
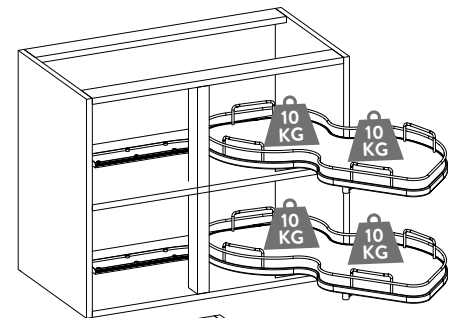
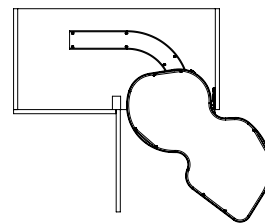
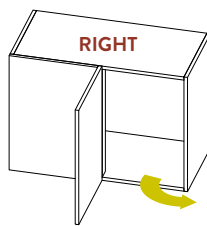
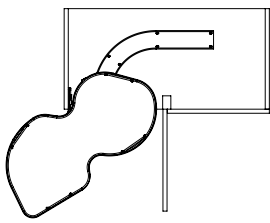
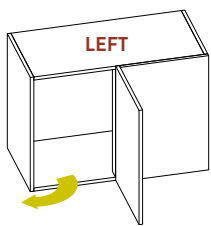
www.questhardware.co.uk
01280 822062

PARTS

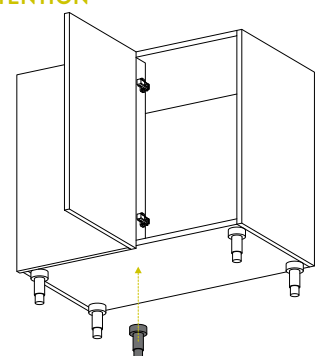
- A. N°2 Shelves
- B. N°2 Slides
- C. N°2 Arm
- D. N°1 Mounting Template
- E. N°2 Plastic Bush
- F. N°4 Stopper
- G. N°2 Pivoting Guide
- H. N°5 Caps
- I. N°1 Drilling Template



	A	B	C
Nuvola 40	min 360	min 800	470
Nuvola 45	min 410	min 900	490
Nuvola 50	min 460	min 900	490
Nuvola 60	min 560	min 1000	490



ATTENTION

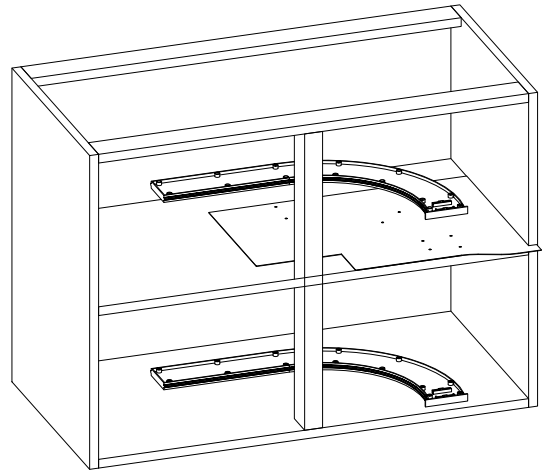
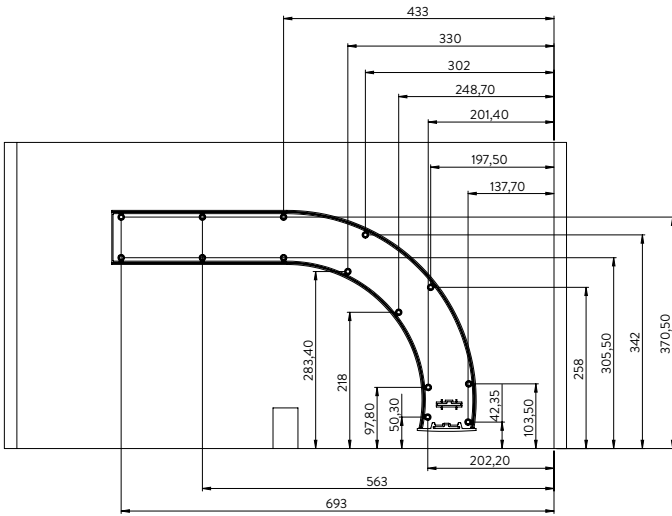


N° 28 4x25



1

Fix the plastic slides B according to the holes previously marked whit temèlate D.

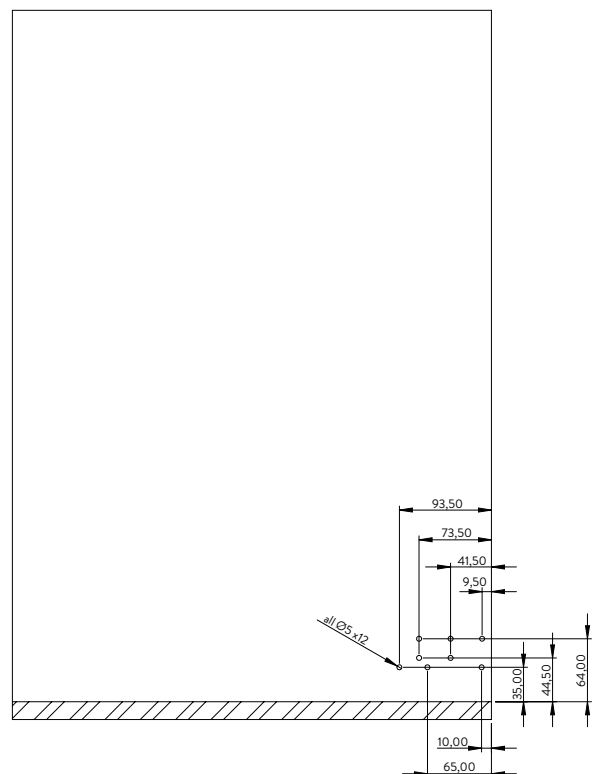
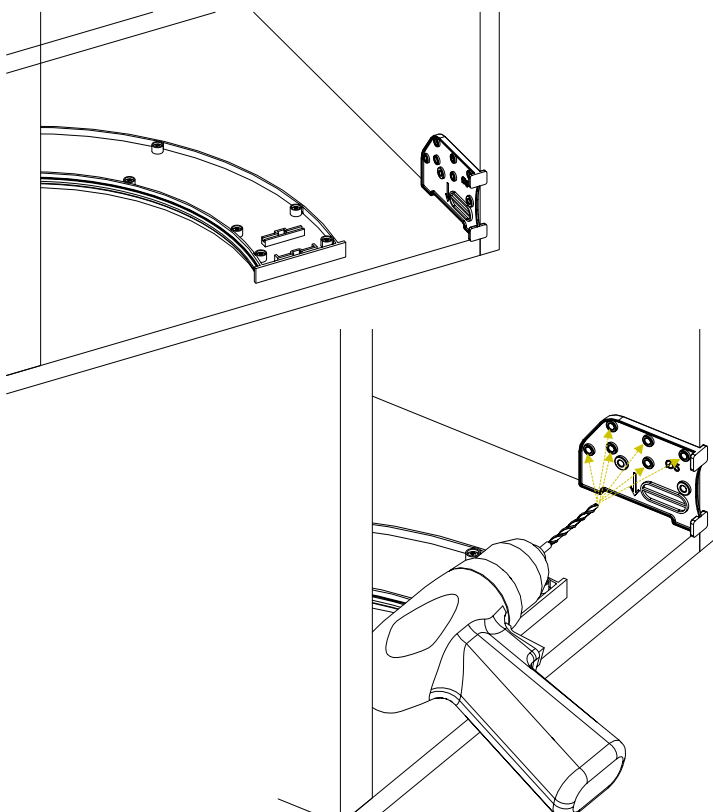


2

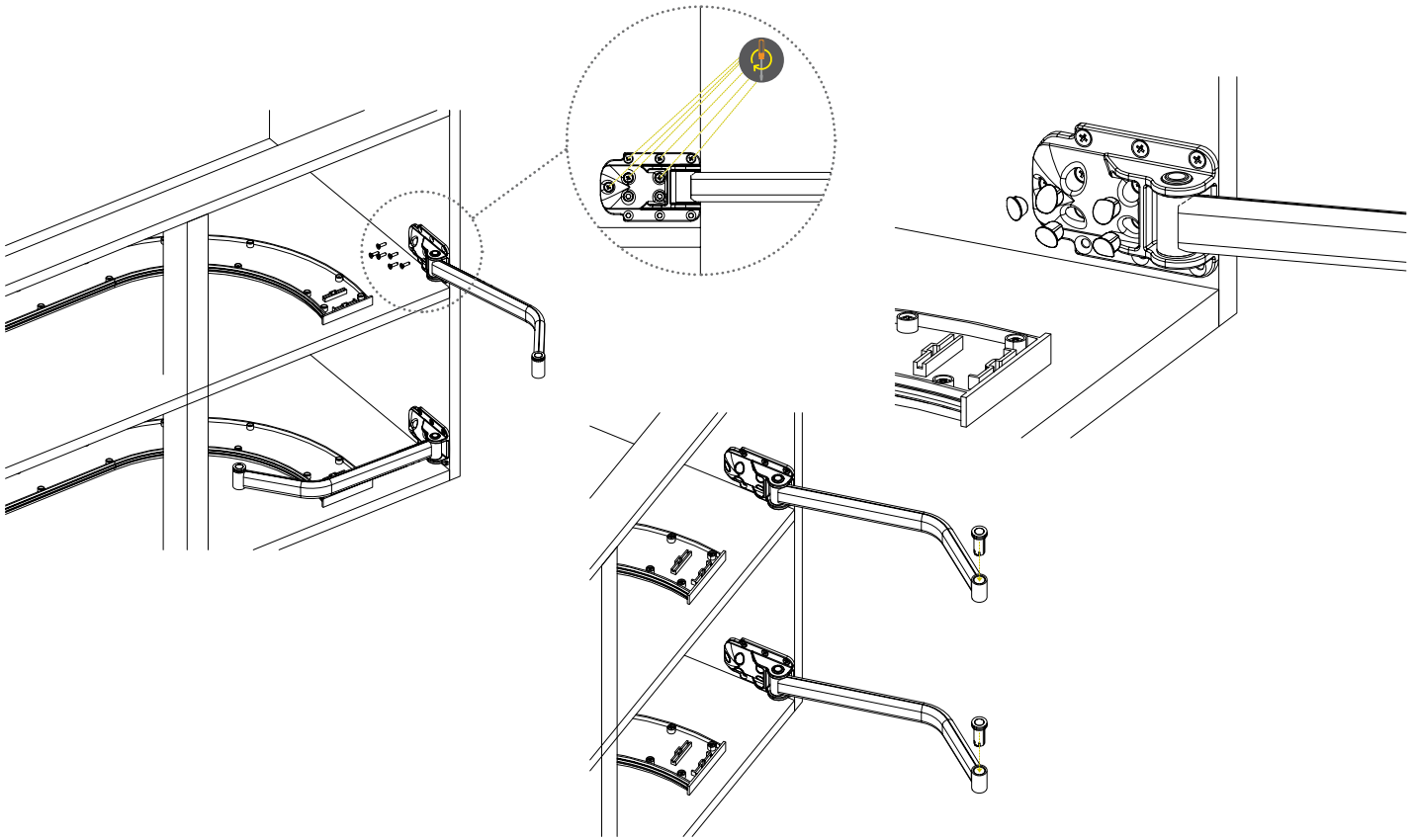
N° 12 6,3x16



Pre-drill the side cabinet using the specific mounting template I or respecting the quotes and then fix the mechanisms C on the cabinet using the provided euroscrews and Insert the plastic bushing E into the mechanism C.

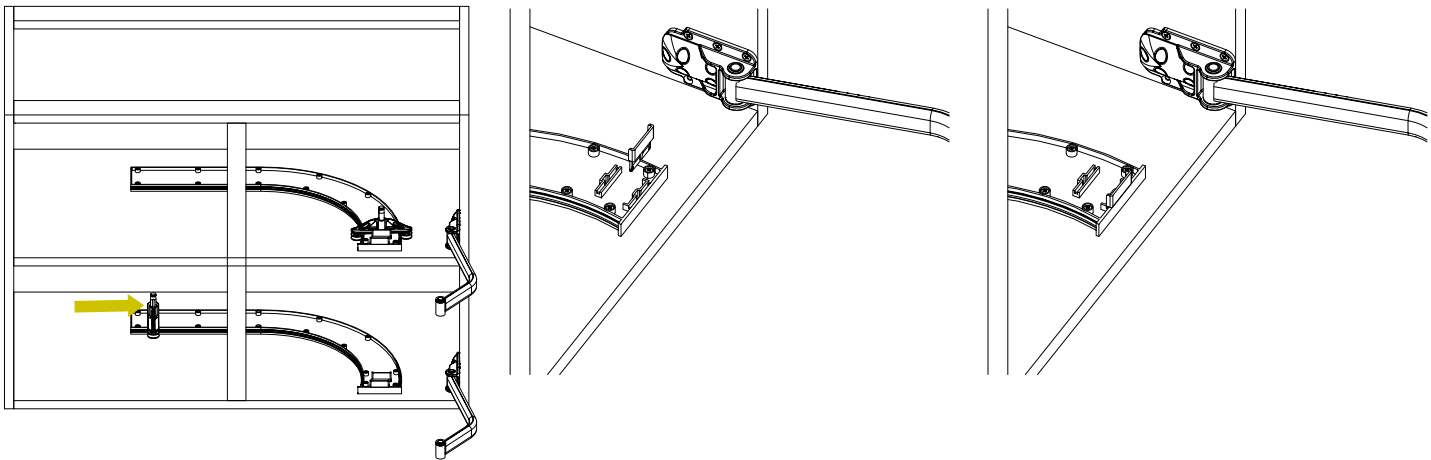


2



3

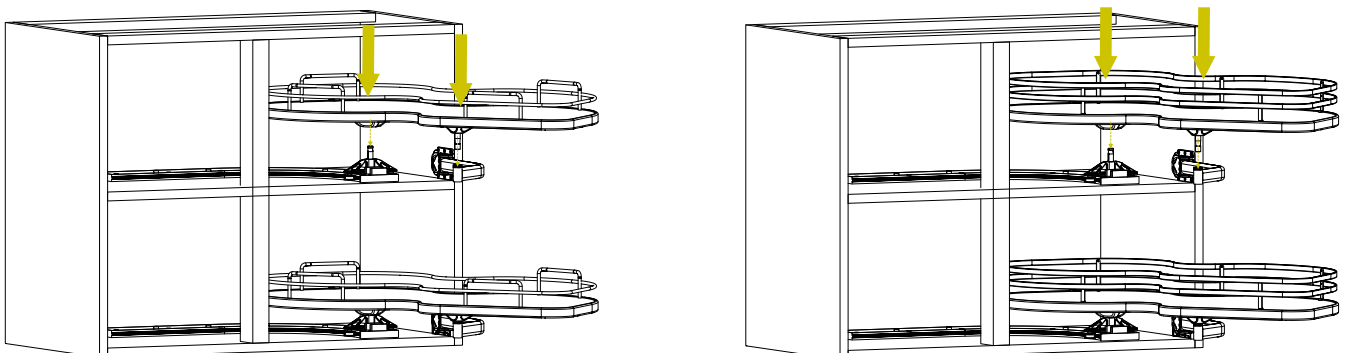
Put the rotation pin G along with the stopper F into the slide B.



4

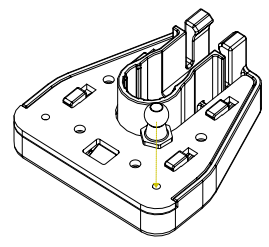
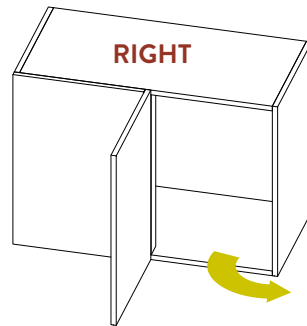
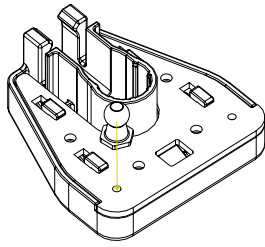
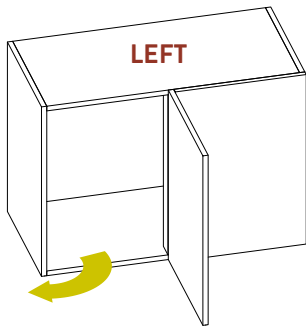
Put the rotation pin G along with the stopper F into the slide B.

Put the shelf into the mechanism C and into the rotating support G previously mounted.



SOFT CLOSE OPTIONAL

Inserire il perno in metallo nel supporto del soft close come figura.
Install the metal pin to the soft close support as shown.
Installez la tige de métal sur le support de l'amortisseur comme indiqué.
Colocar el perno metálico en el soporte del soft close como se ve en la imagen.



Install the metal pin under the shelf using the pre drilled holes. Attach the soft close support to the arm support (fig.1).
Attach the shelf to the track and support arm as shown (fig.2). Install the soft close dampener to the pins (fig.3).

