



SELECT Soft Close Wooden
Magnetic Catch





SELECT

Wooden Magnet Catch



Soft Close Wooden Magnetic Catch

The Soft Close Magnetic Catch is a practical solution for secure and quiet cabinet doors. Designed with flexibility in mind, it offers two door setup options to suit different needs: customers can either install a magnet in the door to attract the wooden magnetic catch or use an adhesive plate for quick and easy attachment.

Key Features and Benefits

- **Soft-Close Pistons:** Gently closes cabinet doors, preventing slamming and reducing wear over time.
- **Flexible Door Setup Options:** Choose between installing a magnet in the door for a secure hold or attaching an adhesive plate to the door, depending on the application.
- **Unlacquered Wooden Components:** Made from oak or walnut, ready to stain, paint, or oil to match cabinet finishes.
- **Left-Hand and Right-Hand Components Included:** Compatible with all cabinet orientations.
- **Compact Design:** Fits easily into cabinetry while maintaining reliable performance.

Recommended Screws for Installation (Not Included)

- **4.5mm countersunk screws** are optimal for the keyhole fixing (leave 5-6mm exposed).
- **3.5 x 20mm screw** is optimal for back fixing.

Code	Finish
CFH504	Unlacquered Oak
CFH505	Unlacquered Walnut



Unlacquered Oak



Unlacquered Walnut

What's Included

(Magnets are pre-assembled for fast and simple installation.)

- **1 Left-Hand Wooden Component** (Unlacquered Oak or Walnut)
- **1 Right-Hand Wooden Component** (Unlacquered Oak or Walnut)
- **2 Soft-Close Pistons** (CFE455)
- **4 Magnets** (CFH351) 1 for door mounting (optional)
- **2 Adhesive Plates** (CFE417) for quick door attachment



Adhesive Plate



Magnets

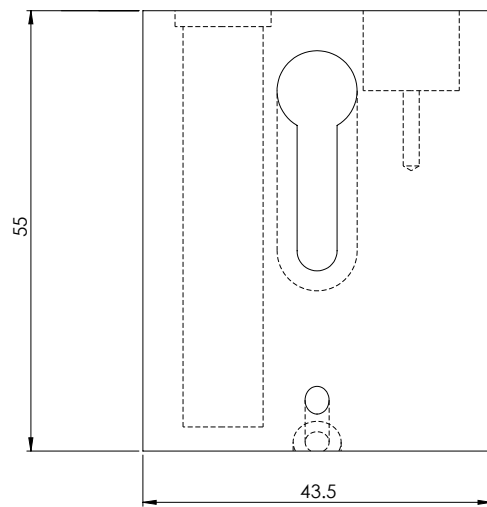
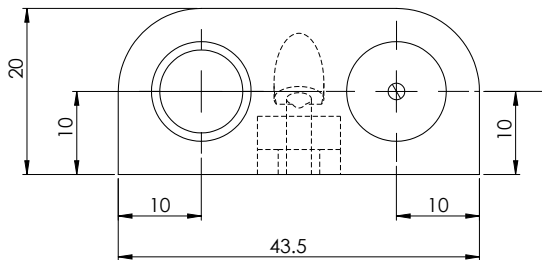


SELECT

Wooden Magnet Catch

Technical Drawings

Left Hand



Right Hand

