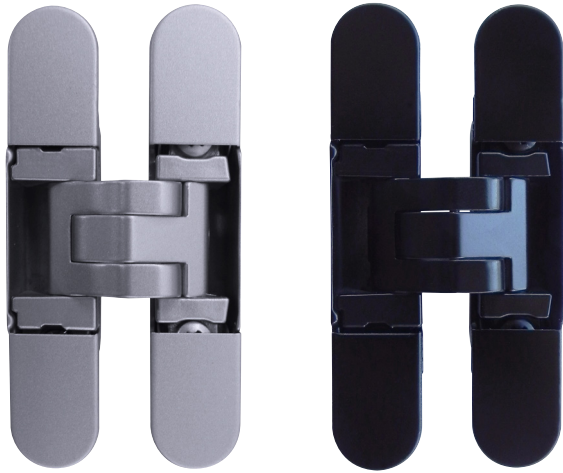




Invisible Cabinet Hinge



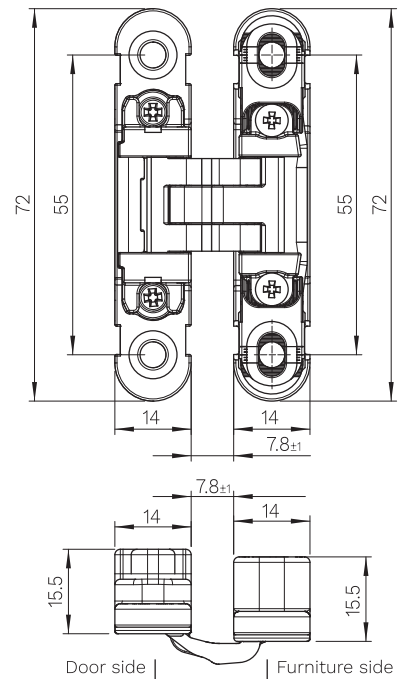


Invisible Cabinet Hinge

Upgrade your cabinetry with the premium Invisible Hinge. Combining compact design with superior functionality, this hinge offers a concealed, minimalist solution that is rarely available in such a small size. Perfect for furniture requiring high precision and modern aesthetics.

Key Features and Benefits

- **Compact Size:** 14mm – ideal for precision cabinetry and small furniture doors.
- **Premium Finishes:** Satin Chrome & Black
- **Load Capacity:**
 - 10.5 kg with 2 hinges
 - 14 kg with 3 hinges
 - 19 kg with 4 hinges
- **Opening Angle:** 180° for full access.
- **Adjustability: 3D independent adjustments:**
 - **Horizontal:** $\pm 1.5\text{mm}$
 - **Vertical:** $\pm 1.5\text{mm}$
 - **Depth:** $\pm 1.0\text{mm}$
- **Durable Construction:** Made from Zamak and steel for lasting performance.
- **Corrosion Resistance:** Spray salt tested for 240 hours.
- Completely concealed when the door is closed for a seamless aesthetic.
- Maintenance-free with self-lubricating bushes.
- Lightweight design at 0.0833 kg per hinge.
- Compact dimensions ensure versatility in tight spaces.



Code	Finish
CFD500	Satin Chrome
CFD501	Black

